



**Southern Maryland Sailing Association**  
**Smallboat Dinghy Distance Race**  
**“7<sup>th</sup> Annual Broken Rudder”**  
**12<sup>th</sup> June 2022**

**NOTICE OF RACE**

**DATE**

**Sunday, 12 June 2022**

**First signal will be made on the water at 1100 hrs.**

---

**REGISTRATION & FEE**

**Included in Annual Smallboat Race Fee or \$20 for non-members and members who have not paid an annual race fee. Entries are due before the Competitors Meeting. Register onsite.**

**Send questions to [smallboatrace@smsa.com](mailto:smallboatrace@smsa.com).**

**COMPETITORS MEETING**

**0930 Sunday, 12 June at the SMSA Clubhouse.**

**CLASSES**

**Anticipated class is Portsmouth. Before the first race of the day, the RC may, depending on the number and type of entries, elect to score additional classes.**

**SOCIAL**

**There is a gathering at the SMSA clubhouse after racing for a results presentation. Availability of refreshments and snacks for purchase is planned. Please see SMSA website under the Race column, Smallboat Racing link for schedule, RC information, and possible social activities and food planning.**

**<https://www.smsa.com/>**



## **SAILING INSTRUCTIONS**

### **1. RULES**

- 1.1. The regatta will be governed by the rules as defined in the Racing Rules of Sailing 2021-2024.
- 1.2. The course must leave the Patuxent River Basin to qualify as a race for the purposes of awarding scoring positions and the winner of the perpetual trophy.

### **2. CHANGES TO SAILING INSTRUCTIONS**

- 2.1. Any change to the sailing instructions will be announced at the competitors meeting at 0930 Sunday, 12 June 2022 at the SMSA clubhouse.

### **3. SIGNALS MADE ASHORE**

- 3.1. Signals made ashore will be displayed on the flagpole at the rear of the SMSA Clubhouse.
- 3.2. When the flag AP is displayed ashore, '1 minute' is replaced with 'not less than 30 minutes' in the race signal AP.
- 3.3. When flag Y is displayed ashore or by RC, rule 40 applies at all times while afloat, this changes the Part 1, Rule 4. A boat that violates rule shall be scored DNC for the day.

### **4. SCHEDULE OF RACES**

- 4.1. First warning will be at 1100 on Sunday, 12 June 2022.
- 4.2. It is the intention of the Race Committee to hold one race.

### **5. RACING AREA**

- 5.1. The racing start area will be located on the lower Patuxent River in the vicinity of Solomons Island.

### **6. COURSE**

- 6.1. See Attachment A , Area C for the starting area.
- 6.2. The Race Committee will announce their intentions for the race course to be sailed during the Competitors Meeting. See Attachment B for the two possible courses:
  - 6.2.1. 1 West Patuxent
  - 6.2.2. 2 Bay
- 6.3. At the discretion of the RC courses 2 & 3 may be reversed and/or shortened. Course 1 may only be abandoned by the RC.
- 6.4. Before the race sequence begins, the Race Committee may select a course from Attachment B and announce its intentions by hailing competitors of the new course, should it be decided that conditions warrant a change. The RC may announce a reversal and/or a shortening of the course before the race.
- 6.5. During a distance race, with the exception government marks used as rounding marks of the course, all government marks are considered marks of the course and must be passed on the proper side. This shall include marks indicating shoals or obstructions such as the white shoal obstruction mark off Town Point on the south-east side of the Thomas Johnson Bridge.
- 6.6. The Race Committee may post the course designation on the rail of the Signal Boat.

### **7. CHECK IN**

- 7.1. Each boat shall sail by the race committee boat and hail their; sail number, class, and last name, and be acknowledged by the race committee with a return hail of her sail number. This shall be done before a boat starts the racing for the evening.



**7.2. A boat failing to comply with the check-in procedure shall receive, without a hearing, a 20% scoring penalty in the first race in which the boat competes, calculated in accordance with RRS 44.3(c). This changes rule 63.1 and A4.**

## **8. THE START**

**8.1. It is anticipated to run one start.**

**8.2. Appendix U, – Sound Signal Starting System, will replace Rule 26, Starting Races. The RC may elect to display a class flag at the warning signal for each class. Audible signals shall govern, even when supplemental visual signals are also used.**

**8.3. The starting line will be between a yellow flag on the RC boat and the designated adjacent race mark.**

**8.4. Boats whose warning signal has not been made shall not enter the starting area during the starting sequence for other races.**

**8.5. It is incumbent on the competitor to time the start correctly. If any part of a boat's hull, crew or equipment is on the course side (OCS) of the starting line at immediately prior to her starting signal and she is identified, the race committee will hail her sail number in accordance with Appendix U. Failure of the competitor to hear the hail or failure of the race committee to time it accurately will not be grounds for a request for redress. This changes rule 62.1(a).**

## **9. THE FINISH**

**9.1. The finish line will be between a yellow flag on a Race Committee boat and the designated adjacent race mark.**

## **10. PENALTY SYSTEM**

**10.1. The penalties are as defined in The Racing Rules of Sailing 2021-2024.**

## **11. TIME LIMITS**

**11.1. The time limit shall be 1800 hours of the same day the race is held.**

**11.2. In case of delay, the race will not be started after 1300 hours.**

## **12. PROTESTS**

**12.1. Protests shall be hailed to the Race Committee immediately following the race in which the infraction occurred. The protest shall then be lodged with the Race Committee at SMSA within one hour of the finish time of the last boat in class after the last race of the day or at the time of Race Committee arrival at the SMSA Clubhouse, whichever is later. Protests will be heard as soon as it is possible to arrange a Protest Committee.**

**12.2. Appendix Rule T, Arbitration, will be offered at the discretion of the Protest Committee.**

## **13. SCORING**

**13.1. Results will be computed using the Low Point scoring system of RRS Appendix A.**

**13.2. One race is required to be completed to constitute a regatta.**

**13.3. The race must be conducted as a distance race with a minimum distance of 5 nautical miles for eligibility for the perpetual trophy.**

## **14. SAFETY REGULATIONS**

**14.1. Prior to her first warning signal, a boat shall check in by sailing close abeam of the signal boat and hailing her sail number and class.**

**14.2. A boat that retires from a race shall notify the race committee as soon as possible.**



- 14.3. A boat shall carry all equipment required by her class rules. If not so specified, she shall also carry one USCG approved PFD, of the appropriate class, for each person on board.
- 14.4. It is recommended that a boat carry a hand-held VHF radio and be familiar with its use.
- 14.5. All boats shall have available an appropriate line, not less than 25 feet long, which can be used for towing. Violation of this provision is not subject to protest or cause for redress but the RC may elect not to provide a tow for a vessel without a conforming tow line.
- 14.6. Competitors should always be alert for a code flag Y displayed from any Race Committee boat invoking Rule 40. Competitors that do not comply with rule 40 when Code Flag Y is displayed shall be scored DNC.
- 14.7. All Competitors under the age of 18 are required to wear USCG Approved Personal Flotation Devices at ALL TIMES while on the water except briefly while changing or adjusting clothing or personal equipment. This includes the time from when the boat leaves the club pier or other launch point until she returns to that launch point. This changes the Part 4 preamble and Rule 40. Competitors that do not comply with this regulation will be scored DNC.

## 15. TRASH DISPOSAL

- 15.1. Boats shall not put trash in the water. Trash may be placed aboard support and race committee boats. A boat failing to follow this rule may be subject to protest by the Race Committee.

## 16. RADIO COMMUNICATIONS & ELECTRONICS

- 16.1. Except in an emergency, a boat shall neither make radio/phone transmissions while racing nor receive radio/phone communications not available to all boats.
- 16.2. The use of electronics for compass bearing, mark routing, or the reception of weather data that is publicly available and not behind a paid wall is permitted. The use of any private and/or paid service or course optimizing software is prohibited.

## 17. PRIZES

- 17.1. Prizes will be given at the conclusion of the series.
- 17.2. Awards will be determined by the number of boats per class: 3/1st, 5/2nd, 7/3rd.

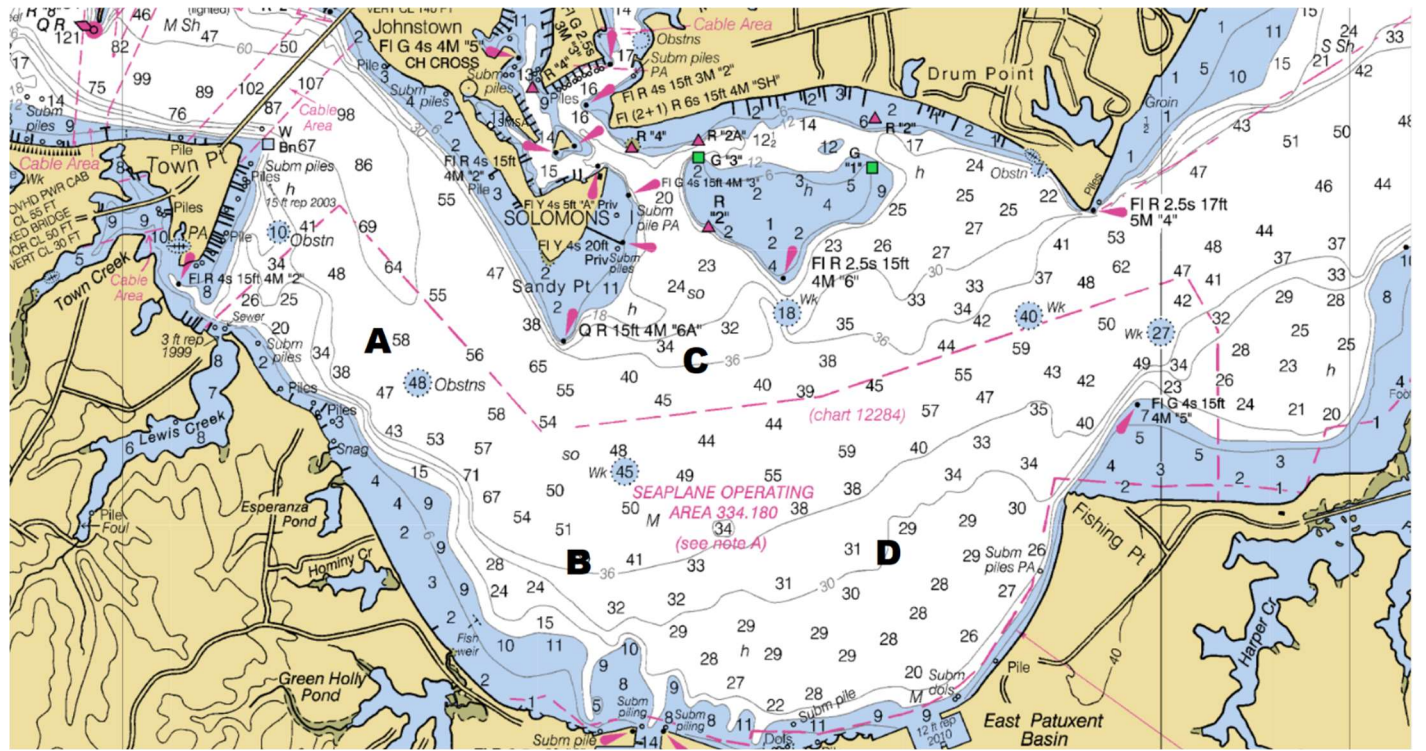
## 18. DISCLAIMER OF LIABILITY

- 18.1. Sailboat Racing is an inherently dangerous activity that may result in injury or death. Competitors participate in the regatta entirely at their own risk. See rule 4, Decision to Race. The organizing authority will not accept any liability for material damage, personal injury, or death sustained in conjunction with, prior to, during, or after this event.



# Attachment A – Areas

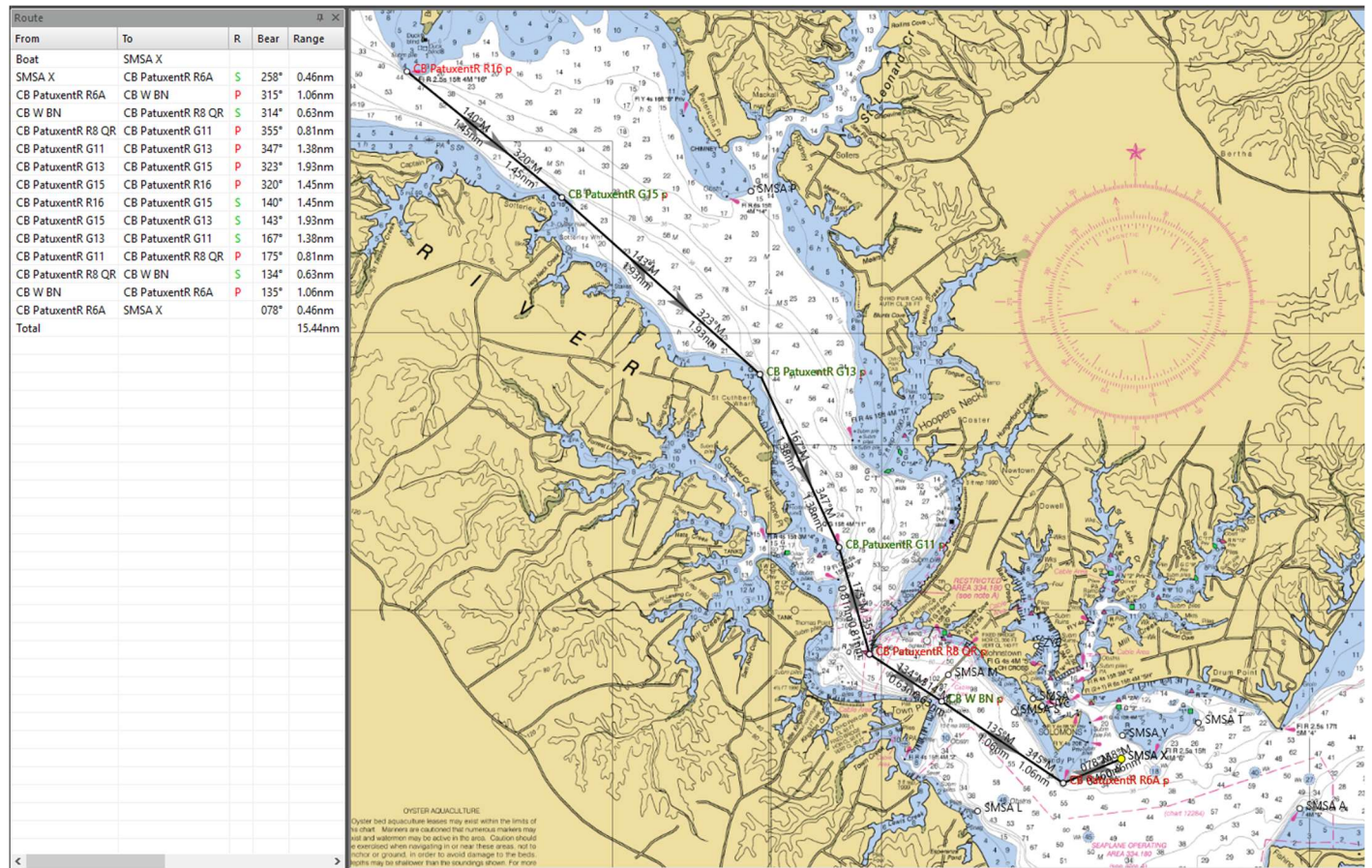
Race start will be in area C.





## Attachment B – Courses

### Course 1 – West Patuxent River





## Attachment B – Courses

### Course 2 – Bay

